

Ron Southern School- School Council/ Parent Council Meeting

October 17, 2024

Minutes

		ACTION ITEMS
1.0	<p>Attendance- In Person: Zoe Serediuk; Ankush Garg; Sammie Cook-Hendrickson; Erin Zackowski; Lindsey Walker; Amanda Sawatsky; Melanie Leptich; Maria Wolfs; Farida Soles; Samantha Josza</p> <p>Attendance- Virtual: Shannon Kushniruk; Laura Bun; Jolene Powell; Jessica Kilgallon</p>	
2.0	<p>Call to order of School Council Meeting 1818</p>	
3.0	<p>Administrative Report</p> <p style="padding-left: 40px;">A. Principal Updates</p> <p style="padding-left: 80px;">- School Planning 2024-2025 School Year</p> <p style="padding-left: 120px;">• Please see slides at the end of the minutes from Zoe and Ankush for details on principal updates</p> <p style="padding-left: 40px;">B. Upcoming Events & Key Dates</p> <p style="padding-left: 40px;">C. Social Emotional Learning- Samantha Josza</p> <p style="padding-left: 80px;">- Please see slides at the end of the minutes.</p>	
4.0	<p>Adjournment of School Council Meeting 1906</p>	
5.0	<p>Call to order of Parent Council Meeting 1907</p>	
6.0	<p>Old Business</p> <p style="padding-left: 40px;">A. Acceptance of the Agenda</p> <p>MOTION: To accept the agenda MOVED: Maria Wolfs SECONDED: Sammie Cook-Hendrickson APPROVED: Unanimous vote</p> <p style="padding-left: 40px;">B. Approval of the Minutes of _ May 8, 2024 _</p> <p>MOTION: To approve last meetings minutes MOVED: Melanie Lepitch SECONDED: Amanda Sawatsky APPROVED: Unanimous vote</p>	

	<p>C. Review Action Items</p> <ul style="list-style-type: none"> - Sammie and Maria added to bank account <ul style="list-style-type: none"> • Still a work in progres - Bus Signs- 2 purchased <ul style="list-style-type: none"> • Signs appear to be working well thus far, less people parking in the bus zones 	<p>Sammie and Maria to continue to work on getting added to bank account</p>
<p>7.0</p>	<p>Financial Report- Maria</p> <p>A. Casino Account</p> <ul style="list-style-type: none"> - Current balance <ul style="list-style-type: none"> • \$53, 840.56 • Need to spend around \$25,000 by December. Zoe and Ankush to talk with staff and get their wish list. - Outstanding Pre-Approved Requests <ul style="list-style-type: none"> • None <p>B. Parent Council Account</p> <ul style="list-style-type: none"> - Current balance <ul style="list-style-type: none"> • \$ 3, 978.78 - Outstanding Pre-Approved Requests <ul style="list-style-type: none"> • None 	<p>Zoe to send staff wish list to board members</p>
<p>8.0</p>	<p>New Business</p> <p>A. Vote in new Co-Chairs</p> <ul style="list-style-type: none"> - Introduction of all Council members <ul style="list-style-type: none"> • New chair vote in: Sammie Cook-Hendrickson moved to vote in by Erin Zackowski as new chair. Seconded by Melanie Lepitch. Unanimous agreement vote by all in attendance. Sammie is the new chair. • New co-chair vote in: Amanda Sawatsky moved to vote in by Erin Zackowski as new co-chair. Seconded by Maria Wolfs. Unanimous agreement vote by all in attendance. Amanda is the new co-chair. <p>B. Welcome Back BBQ</p> <ul style="list-style-type: none"> - Overall Cost of BBQ <ul style="list-style-type: none"> • \$846.10 • Donations of \$100 by Silverado Sobeys; \$400 by South Calgary Wholesale Foods; and MLA Rebecca Shultz donated all the water and juice boxes. • Leftover chips, granola bars and juice boxes were donated to the school to use for students who receive the brown bag lunch. Leftover hot dog buns were donated to the Veterans Food Bank. Leftover hot dogs are frozen for future use. Leftover water bottles kept for future meetings. •BBQ a HUGE success with over 500 hot dogs being served 	<p>Sammie to send thank you to wholesale foods.</p>

	<p>C. QR Code Anonymous Survey- Maria</p> <ul style="list-style-type: none"> - How many have been submitted? <ul style="list-style-type: none"> • 10 responses received. QR code is no longer active. • All those who completed the survey thought having a hybrid meeting with online available as a good idea. <p>D. New Facebook Group Update- Melanie</p> <ul style="list-style-type: none"> • Lots of new members. Posting about fundraising and meetings is getting positive results. • Suggestion received to send home an announcement with all students that there is a FB group that students and/or their parents can follow. <p>E. Casino</p> <ul style="list-style-type: none"> - New Casino Dates announced: November 30th and December 1st at Ace Casino Airport. - Update from Sammie on casino license, number of volunteers still needed, etc. <ul style="list-style-type: none"> • 10 volunteers still needed, 8 of those are needed for Sunday. • Casino license is obtained <p>F. Permanent Sign for Ron Southern</p> <ul style="list-style-type: none"> - An additional idea of getting a permanent sign out front of the school was brought up. The sign would allow for announcements to be posted, PD Days, etc. - Contact person? <ul style="list-style-type: none"> • Zoe has been in contact with Sandy Quinn to get a quote on a price for a permanent sign, will follow up and let board know the quote once received. <p>G. New Junior Playground</p> <ul style="list-style-type: none"> - An idea of building a new junior playground utilizing casino funds was discussed. - Contact person? <ul style="list-style-type: none"> • Sandy Quinn is also the contact person for this. Will need to email her and see if we can get a quote on a new all inclusive playground. <p>H. Miscellaneous</p> <ul style="list-style-type: none"> - “Mud Pit” on Playground Side of School <ul style="list-style-type: none"> • We cannot use the previous landscaper, Brody, to help fix this issue. Zoe is handling this and will keep the board informed. 	<p>Melanie to post on Facebook group and Trailblazer about need for more volunteers.</p> <p>Zoe to follow up with Sandy Quinn about this.</p> <p>Erin to send Zoe and email that she can forward to Sandy Quinn.</p> <p>Zoe to follow up with the board on quote to fix “mud pit”</p>
--	--	---

9.0	<p>Fundraising Update- Melanie</p> <p>A. Bottle Drive- May 26th -How much did we fundraise? • \$818.20</p> <p>B. Mabels Labels - Current amount brought in • \$44.99 • This fundraiser will run all year. Continue to occasionally mention in the Trailblazer and FB group.</p> <p>C. Big Box of Cards - Currently running until October 28th • Boxes should be delivered by middle of November</p> <p>D. Cookie Dough • Is not being called a fundraiser. We have brought this back as there has been a lot of interest • Will start November 6th and will run for 2 weeks. Will have the product delivered before the holidays.</p> <p>E. Fun Lunch/ Healthy Hunger - First fun lunch of the year October 24th • The last fun lunch in May brought in approximately \$400 • Always looking for volunteers to help</p> <p>F. Other Fundraising Ideas • Purdy's Chocolates; Apples; Bear Tracks Ice Melt; Poinsettias; Planters in the spring. • Melanie has already sent in the request to do the apple fundraiser next fall. Fundraiser only done in the fall, and have to send in request a year in advance.</p>	<p>Melanie to repost on FB group about Big Box and end date.</p> <p>Melanie to finalize handout for students to take home.</p>
10.0	<p>Adjournment of Parent Council Meeting 1942</p>	
11.0	<p>Next Meeting - November 21, 2024 • Will be a hybrid meeting. There will be no Dec meeting.</p>	

cbe.ab.ca



Ron Southern School Parent Council October 17, 2024



Calgary Board
of Education

cbe.ab.ca



Acknowledging the land where we gather



We would like to acknowledge the traditional territories and oral practices of the Blackfoot Nations, which includes the Siksika, the Piikani, and the Kainai. We also acknowledge the Tsuut'ina and Stoney Nakoda First Nations, the Métis Nation (Region 3), and all people who make their homes in the Treaty 7 region of Southern Alberta.



learning | as unique | as every student



Current Numbers

- Kindergarten – 58
- Division 1 – 243
- Division 2 - 207 (each division total includes EES)
- September 30 –enrollment was 505 and we are currently at 508.

September - Diagnostic Assessments

- **Kindergarten** – letter/sound, pre-printing - lines and shapes and baseline for shapes and numbers (in and out of order) **January** –*Provincial Numeracy Screening Assessment, Provincial Reading Tests: LeNS, PAST & RAN*
- **Grade Ones: Sept:** *Provincial Numeracy Screening Assessment, Provincial Reading Tests: LeNS, PAST & RAN, January* retesting and **May** only students who were at-risk in the January tests
- **Grade Two – Sept:** *Provincial Number Screening Assessment, Provincial Reading Tests: LeNs(Letter and Sound Assessment) and the CC3 (spelling), Jan* – retesting and **May** only students who were at-risk
- **Grade Three – Sept:** *Provincial Number Screening Assessment, Provincial Reading Tests: CC3 (spelling),*
- **Grade 4** – Fountas and Pinnell Reading Assessment, MIPI(Math), Words their Way
- **Grade 5/6** – Fountas and Pinnell Reading Assessment, MIPI(Math), Words their Way, Dibbles (reading fluency and comprehension)
- **EES –ABLLS** and some basic kindergarten/grade one assessments depending on the student.

cbe.ab.ca



Three-Year System Student Accommodation Plan (SSAP) 2024-27



Calgary Board
of Education

Share information about:

- CBE's Three-Year System Student Accommodation Plan (SSAP)
- Share information about why our school has been identified in the 2024-27 SSAP



- Three-Year System Student Accommodation Plan is prepared each year.
- Identifies changes that will occur for the upcoming school year.
- Identifies anticipated student accommodation challenges over the next three years.

Student Accommodation Planning at the CBE

- Collaborative process that identifies and responds to challenges.
- CBE Planning works with Area directors and Communications and Engagement Services to identify schools with potential capacity challenges and needs for communications and community engagement.
- Examples of issues:
 - Schools that are too full or schools with low or declining enrolment
 - Schools that may be impacted by the opening of a new school in the future

CBE Planning Principles

- Minimize disruptions for students
- Provide program continuity from kindergarten to Grade 12
- Keep groups of students together
- Allow students to attend school as close to home as possible
- Provide long term sustainability
- Use space and resources effectively
- Provide equitable access for all students to quality learning environments and choice of programs

cbe.ab.ca



Near or
Over Capacity

ISSUE: Near or Over Capacity

Why is our school part of the 2022-25 SSAP?

- Your school is approaching capacity or is over capacity.
- It has also been identified that changes may be needed to accommodate this challenge in the next 18 months.


ISSUE: Near or Over Capacity

What are some of the possible changes we could see?


Should your school's enrolment remain stable or decrease, no action may be called for. Should enrolment continue to increase, potential actions may include:

- A change to the school's attendance area.
- Re-designation of a community that is being bused to the school.
- Identifying an overflow school for students who cannot be accommodated at the school.
- A grade configuration change.

cbe.ab.ca



Keeping You Informed



Calgary Board
of Education

How Will School Communities Be Involved?

Level of involvement dependent on potential solutions and options available.

- If solutions are limited there may be no opportunity for stakeholder feedback to inform the decision.
- If there are options available, stakeholders will be asked for feedback on the opportunities and challenges of potential solutions.
- Involvement is determined based on the CBE Dialogue Framework. Go to www.cbe.ab.ca/dialogue.

How Will Decisions be Communicated?

We will share information about potential school accommodation developments and changes via the following channels:

- [School Messenger](#)
- [Weekly Trailblazer](#)
- [School Website](#)
- [School Council](#)

Families new to the school will be advised of any potential accommodation challenges at the time of registration.

16

What If I Have Questions?

- Please talk to your school principal.
- The principal will work contacts at the CBE to answer any questions you have.

17

Where Do I Find the SSAP?

Go to the CBE website: www.cbe.ab.ca/ssap

Odds and End

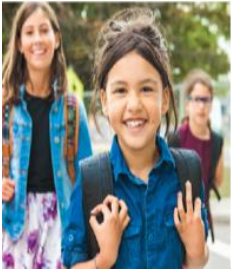
- October 25th – Staff Professional Learning – Focus on Mathematics
- Parking is improving slowly – Just purchased Kid Alert – Slow statues for Silverado Blvd. crosswalk
- Sign and mud spot update
- Social Emotional Competencies – Learning Leader Samantha Jozsa.

cbe.ab.ca

SEL Parent Council

SEL Parent Council

October 17th



learning | as unique | as every student



cbe.ab.ca

SEL PD

What is SEL?

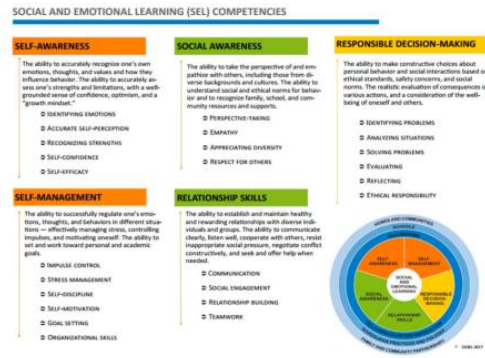


<https://www.youtube.com/watch?v=ikehX9o1Jbl>



5 Competencies

- Focus on Self Awareness this year
- Identifying emotions, self perception, recognizing strengths, self confidence, self efficacy.



Target

As a school we want students to be able to do the following:

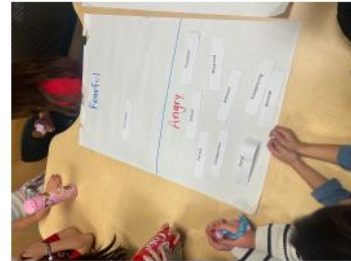
- They tell what they are feeling and name their emotions right when they happen.
- Students think about what makes them feel a certain way and how their feelings affect them.
- They can notice when feelings, thoughts, and opinions affect how they act and how they react to people and things, in both good and not-so-good ways.

Examples



- Emotions Wheel/ Emotion Sort activity
- Case Studies and Role play activities
- Reviewing Zones and identifying when they are in what Zone during certain parts of the school day
- MooZOOM.com case studies and emotion daily check in.

Examples



Wellness

Case Study 1#

Billy's teacher tells them it is time to clean up and get into line for gym. Billy races to clean up and then runs to the line up and budes in front of his classmates. His classmate Jill tells him that he budged and to go to the back of the line.

How can you support your child at home?



- Reading books on emotions.
 - For example *The Way I Feel* by Janan Cain
- Inferring a character feelings when reading with your child
 - For instance “What do you think ___ might be feeling when that happened?”
- Modelling self awareness with your own emotions.
 - For example “I really felt like _____ when this happened.”
- Modelling a growth mindset by framing challenges in a positive way.
 - For example “I am not sure how to do that **yet**” instead of “I am not good at this.”